

GaBi Software 10.0.1 & GaBi Content Version 2021.1 Update Guide and Important Instructions

February 2021



List of Contents

Introduction and overview	2
1. Important information about your software and databases update.....	3
2. Update your GaBi Software.....	5
3. Important information for users with German language databases.....	7
4. Update your databases to GaBi Databases 2021.1.....	8

Introduction and overview

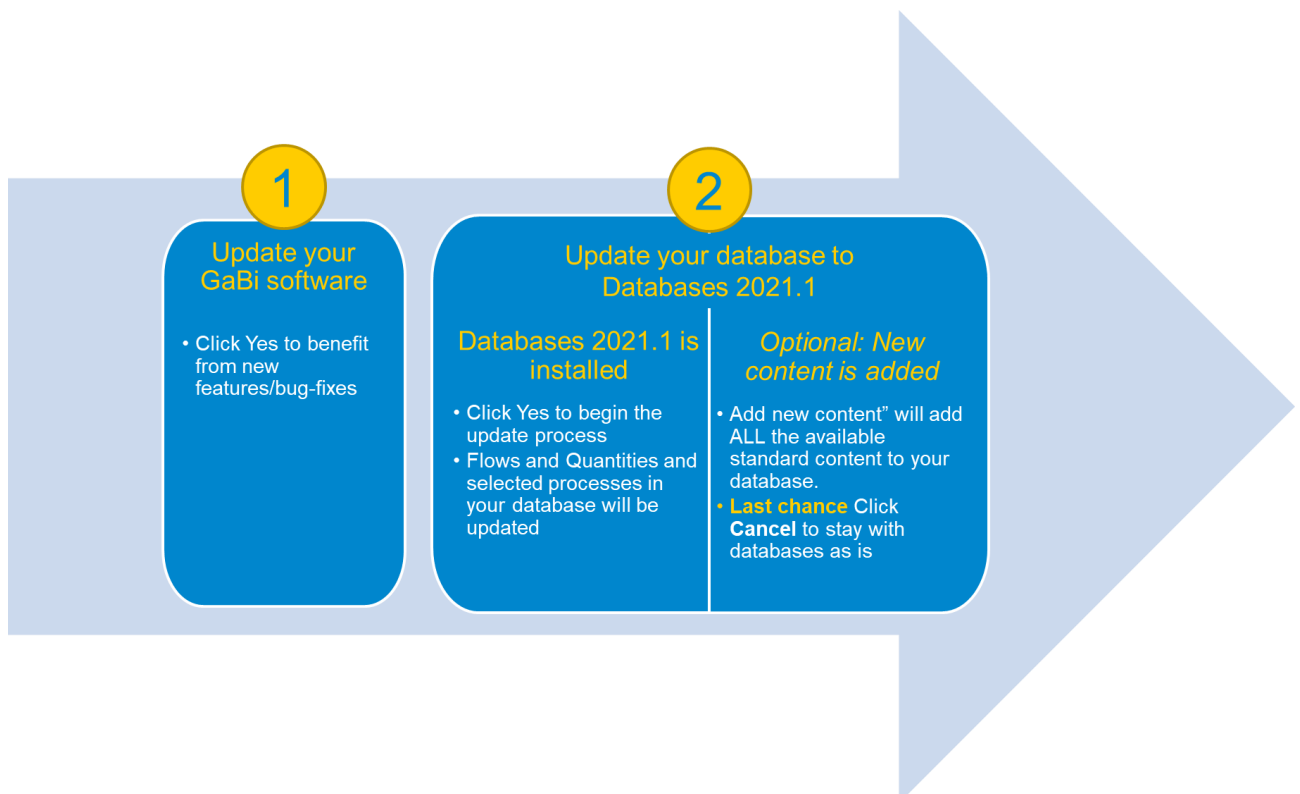
Sphera is proud to deliver, as part of your annual GaBi maintenance package, a new software version and a database content upgrade! This guide will take you step by step through the update procedure. Learn more about the updates on the [Sphera Customer Network \(SCN\)](#).

The update process has two major steps. The GaBi software update and the content update.

The first step is to update your GaBi software to the latest version. After this, each time you activate one of your databases for the first time, you'll be asked if you want to update it. Choosing 'Yes' will start the update process. We recommend to do so, while you can choose to continue using the old version, e.g. if you are close to complete a project. The content update itself consists of the following steps:

1. Flows and quantities are updated.
2. Original GaBi processes are exchanged with their updated equivalent.


Here is an overview of the procedure:



1. Important information about your software and databases update

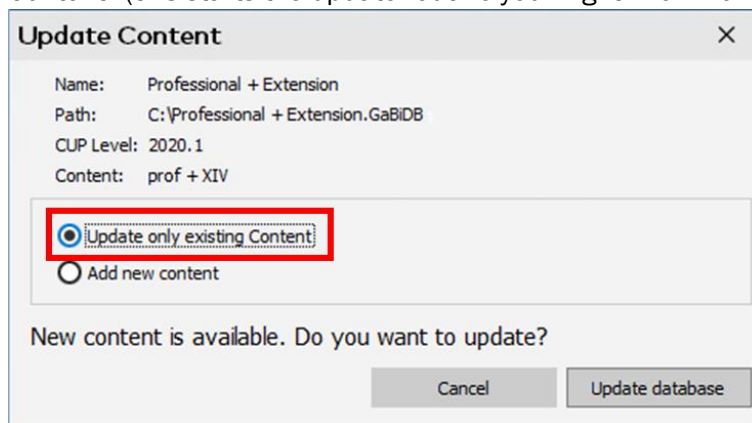
- The software update is a fast step, taking a few minutes. It does not change any content of your databases.
- The subsequent database update – initiated for each database separately as you activate them - will update the content to GaBi Content Version 2021.1. This will change the results of your models because of updated flows and processes.
- **Update capabilities with GaBi 10**

Update runs in separate process

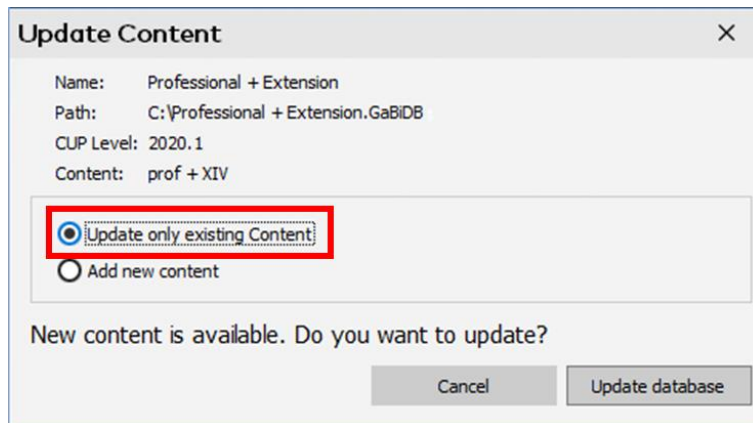
- Once you open a database and accept the update to be installed, the database will be marked as locked with a padlock icon (e.g.  professional database) and a new process will start in the background applying the update.
You can continue working on other databases once the update process is running.
You can run an update on multiple database at the same time if you want to (right-click on another database and select 'install content updates'). As the database update is a time- and performance-demanding process, we recommend running not more than two updates at a time.

Adding new content is easier

- When updating a database with GaBi 10, you can choose to “Update only the existing Content” (this starts the update routine you might know from earlier versions)



or you can choose the option “Add new content”. Selecting this option will update the existing content in the database and will additionally add ALL new and available content to your database. Available content means all the plans and processes that are activated on your license file. Please note that the ecoinvent processes will not be added!



We recommend choosing option 2 for your Master- or template-database where you might want to have all content available. We would not recommend adding the complete content to all of your databases.

When selecting “Add new content”, also the standard projects for the professional database and licensed extension databases are updated!

As we have this option available in GaBi 10, the tedious procedure accessing the new datasets has changed to a simplified and intuitive process.

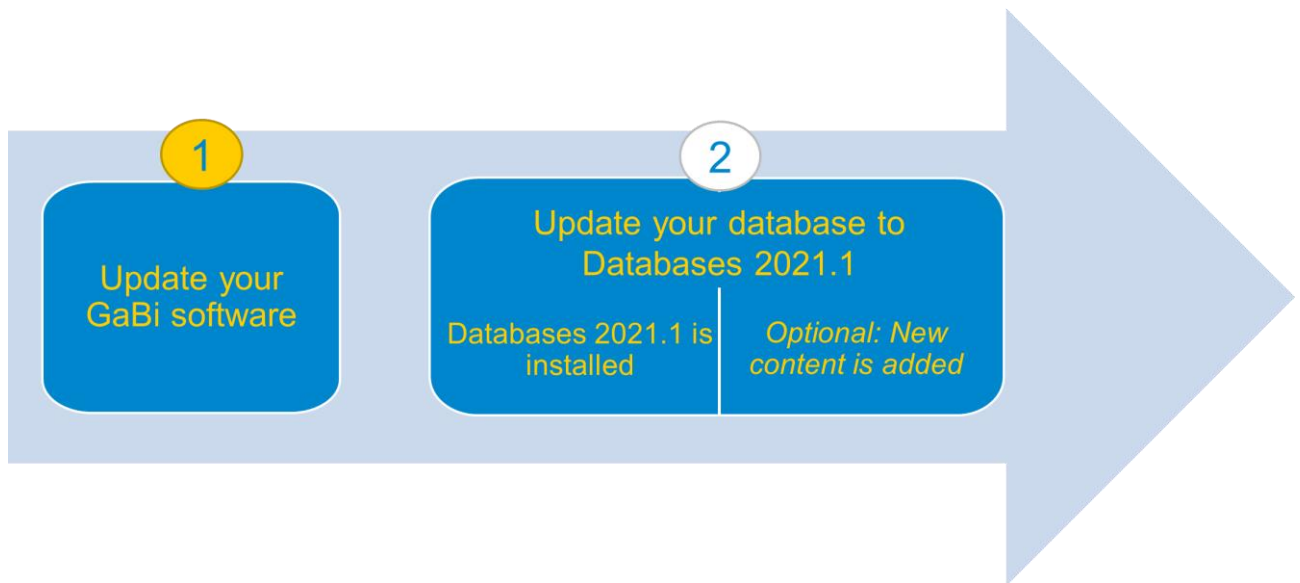
German update files separated

- Important note for German database users: Please carefully read chapter 3!
- As a matter of fact, the time needed to update your database can vary due to several factors (computer performance, size of overall database, number/complexity of plan models included in the database). We recommend disabling your computer’s energy settings to go into standby mode for the update and to leave the update for very huge databases running over night.

Especially ecoinvent databases need a long time to be updated due to the number of processes processed.

- If you encounter any difficulties in the installation/database update processes, please send an e-mail to gabi-support@sphera.com or raise a ticket in the [Sphera Customer Network](#).

2. Update your GaBi Software



The new GaBi version 10.0.1 will be available to you via the automatic update functionality in the GaBi software. No new installation procedure will be necessary.

On February 18, 2021, the new software version will be available on the GaBi update server – GaBi software will prompt you to download the updated version.

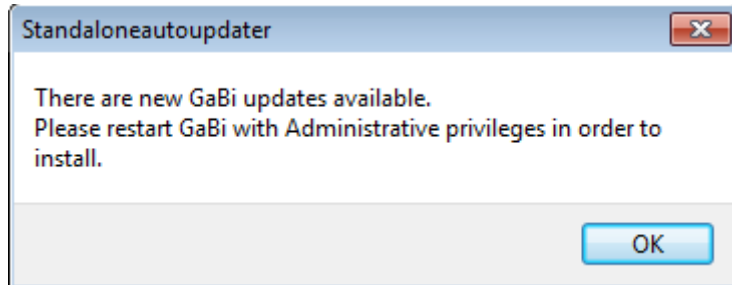


Figure 1: GaBi update notification

If you do not have a valid maintenance contract or active subscription license, you will not have access to this update and GaBi software will not inform you about the availability of the new version. Please contact your local GaBi sales representative for a quote.

To download and install the new version, you need administrative user rights for Windows. (Restart GaBi by right-clicking your mouse and choosing 'Run as Administrator'.) If you do not have the necessary user rights, please contact your IT support.

Note that after the update, databases that were previously connected are no longer visible, because GaBi was started as a Windows administrator and not with your standard windows user account. Simply restart GaBi to see them again.

If the connection to the update server cannot be established for some reason, an error message with the cause of the problem will appear ("Host <http://service.thinkstep.com> unreachable" or "Could not find file on developer side"). In this case, please send an e-mail to gabi-support@sphera.com and we will provide you with an alternative solution to update your GaBi software.



Now that your GaBi software is up-to-date, you can either update your databases to the GaBi Databases 2021.1 Edition or you can keep your database content at an earlier level.

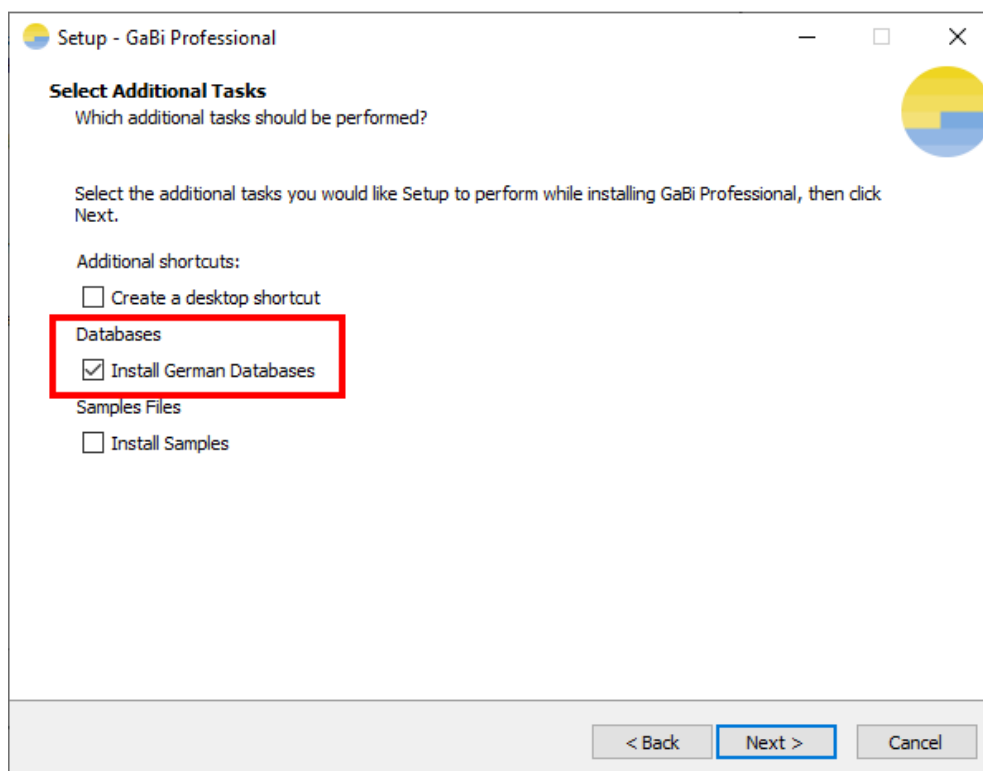
3. Important information for users with German language databases

German update files separated

With the new update routine implemented with GaBi 10, we separated the German update files from the standard update setup to save download time for most of our users who are using the English version only.

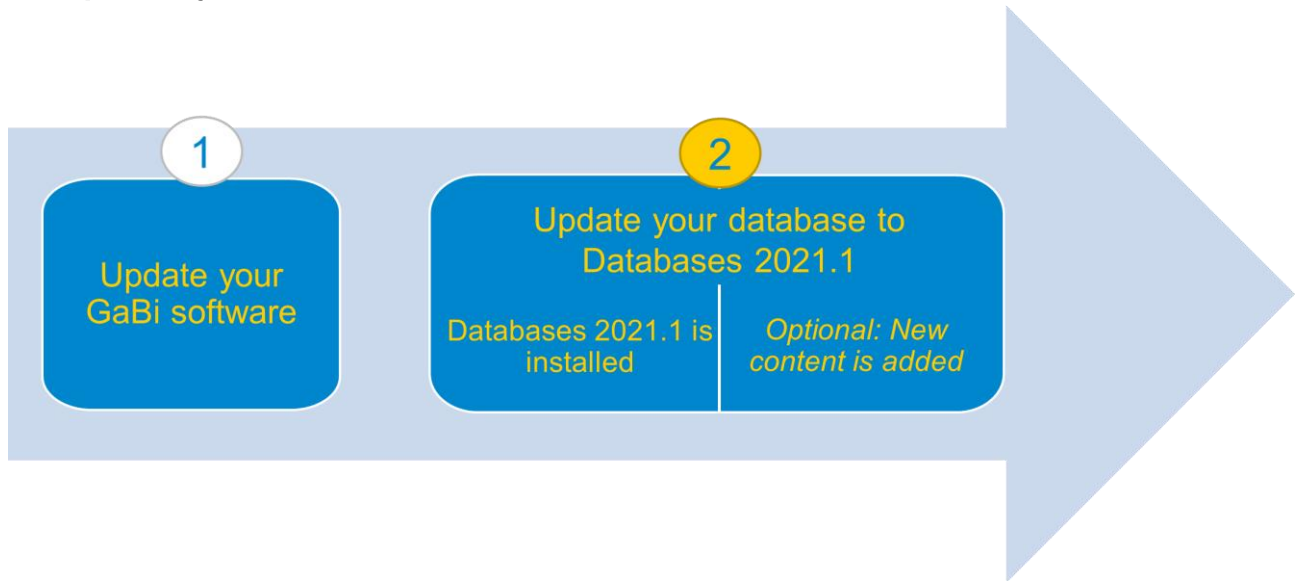
How to access the files

If you are using German language databases, please check the option showed in the picture below available during the software update installation.



Selecting this option will show another “Updates are available” when starting the software. Please accept this update, download and install it. This will download and install the required files for updating databases with German language settings.

4. Update your databases to GaBi Databases 2021.1



Required disk space

Before starting a database update, make sure you have enough free disk space. We recommend you have three times as much free disk space as the size of the database that you want to update. GaBi will always write a database backup so you will never lose the database version as it was before.

As a general rule, GaBi writes the backup to this location:

C:\Users\[your Windows username]\Documents\GaBi\DB_DB BACKUPS

If this path is not located on your hard disk, but on a server, you may also need to check whether you have enough disk space on your server located Windows profile.

Update procedure

To update your databases to GaBi Databases 2021.1 (and thereby update your database content and results), you need to install the offered database update when activating a database.

First, when activating any of your databases, you will see the following dialogue. For upgrading the content of that specific database, please accept the installation:

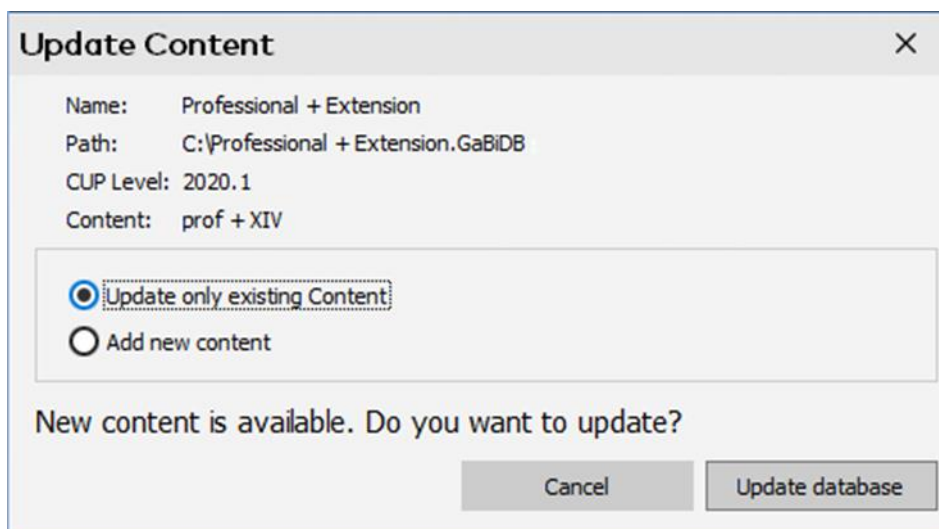


Figure 2: Database content update installation window



Important Note: The update process can take several hours depending on the size of the database and the performance of your computer. This process should not under any circumstances be interrupted (even if GaBi appears to be 'Not Responding').

What happens during the update?

- Selected Sphera standard GaBi database content you've used in your models, will be automatically exchanged during the update.
- Processes you have created yourself will not be touched.
- If your plan contains only processes you have created, these will not be touched. If your plan contains Sphera standard database content, these processes will be exchanged.
- Choosing the first option "Update only existing Content" will only update the existing content. None of the datasets that are new in the database update will be added to your updated database.
Choosing the option "Add new content" will add ALL the available standard content to your database. Available content means all the plans and processes that are activated on your license file. Please note that theecoinvent processes will not be added!
- Corrections (if any) and additions to existing LCIA Methods, flows, etc. will be implemented, again only to objects that were delivered by Sphera; any LCIA Methods, flows, etc. that you have created will not be touched.

The update is complete when you see the Log file window. Please save this protocol.

Congratulations! Your database has now been updated to the GaBi Database 2021.1 Edition! See the following section to learn how to access the new database content.

If you encounter any difficulties with update or have any further questions, please login to the SCN and create a ticket or send an e-mail to gabi-support@sphera.com.



www.sphera.com

www.gabi-software.com

For more information contact us at:

<https://sphera.com/contact-us>

©2021 Sphera. All Rights Reserved.