

Press Release

February 2018

Contact person for the editor:

Schüco International KG
Ulrike Krüger
Karolinenstr. 1–15
33609 Bielefeld
Tel.: +49 (0)521 783-803
Fax: +49 (0)521 783-950803
Mail: PR@schueco.com
www.schueco.de/presse
www.schueco.de/press

Individual and tailored:

New EPD tool for SchüCal

Bielefeld. Schüco EPDs provide consistent data over the entire life cycle of building products. Now the company has automated the process of product certification and, together with thinkstep AG from Leinfelden-Echterdingen, has developed an EPD tool for the planning and calculation software SchüCal. For a SchüCal building, individual dimensional environmental product declarations (EPD) for Schüco constructions made of aluminum can be determined. Schüco is currently the only system house owned by the Institut für Bauen und Umwelt e. V. (IBU) certified individual EPDs with software.

And this is how the new tool works: The metal worker constructs the Schüco windows, doors, facades, sliding systems and fire doors and façades virtually in SchüCal. Based on the masses and materials determined by element sizes and constructive design, the individual and measurement-related data for each planned element are calculated exactly.

The Schüco EPD tool is based on DIN EN 15804. The program holder for the tool is the Institute for Building and Environment e.V. (IBU). The IBU, the leading organization in Germany, is an association of building material manufacturers and associations that have committed themselves to sustainable construction. With its EPD program, the organization operates an internationally recognized and independent information system for construction products: EPDs contain comprehensive quantitative information based on a life cycle assessment and must be verified by independent third parties in accordance with DIN EN ISO 14025 and DIN EN 15804. Thus, these product

declarations transparently present potential environmental impacts without being evaluated. They document which raw materials with which energy input flow into a building product and which environmental effects arise from the production over the useful life up to disposal or recycling. The auditors of the building certification systems, such as BNB, DGNB, BREEAM, HQE and LEED use EPDs to assess buildings in terms of sustainability.

The five sample EPDs that formed the basis for the verification are publicly available on key platforms such as the IBU at www.ibu-epd.com and the Eco-Budget Information Portal at www.oekobaudat.de

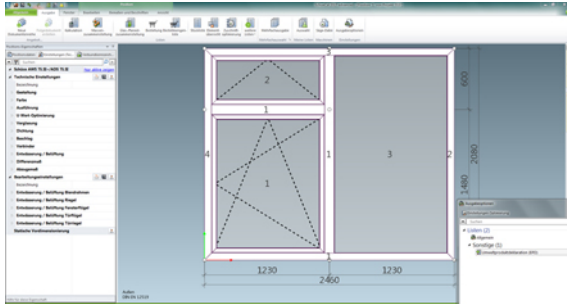
Further information on sustainability or Cradle to Cradle® products from Schüco can be found at www.schueco.com/sustainability

Schüco - system solutions for windows, doors and facades

Schüco International KG, headquartered in Bielefeld, develops and sells system solutions for windows, doors and facades. With over 4,750 employees worldwide, the company is working to be the industry's service and technology leader today and in the future. In addition to resource-saving products for residential and work buildings, the building envelope specialist offers consulting and digital solutions for all phases of a construction project - from the initial idea through planning and production to assembly. 12,000 fabricators, planners, architects and investors work together with Schüco worldwide. The company operates in more than 80 countries and has annual sales of 1.460 billion euros in 2016. Further information at www.schueco.de

Picture credits: Schüco International KG

The images are in the Schüco Newsroom under www.schueco.de/press for download.



With the new EPD tool, individual dimension-related environmental product declarations (EPD) for Schüco constructions made of aluminum can be determined for a building from SchüCal.



Schüco is currently the only system house owned by the Institut für Bauen und Umwelt e. V. (IBU) certified individual EPDs with software.